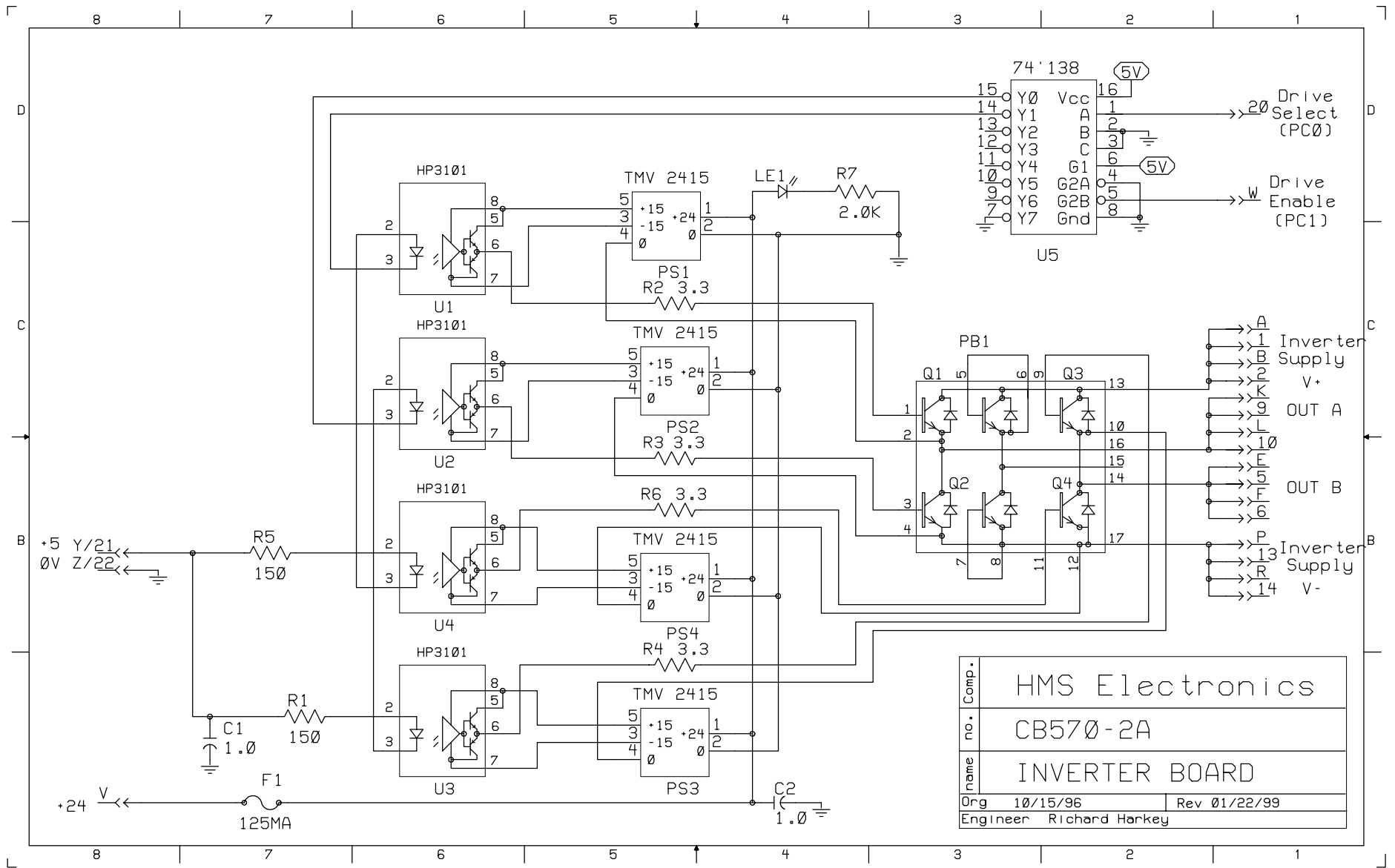
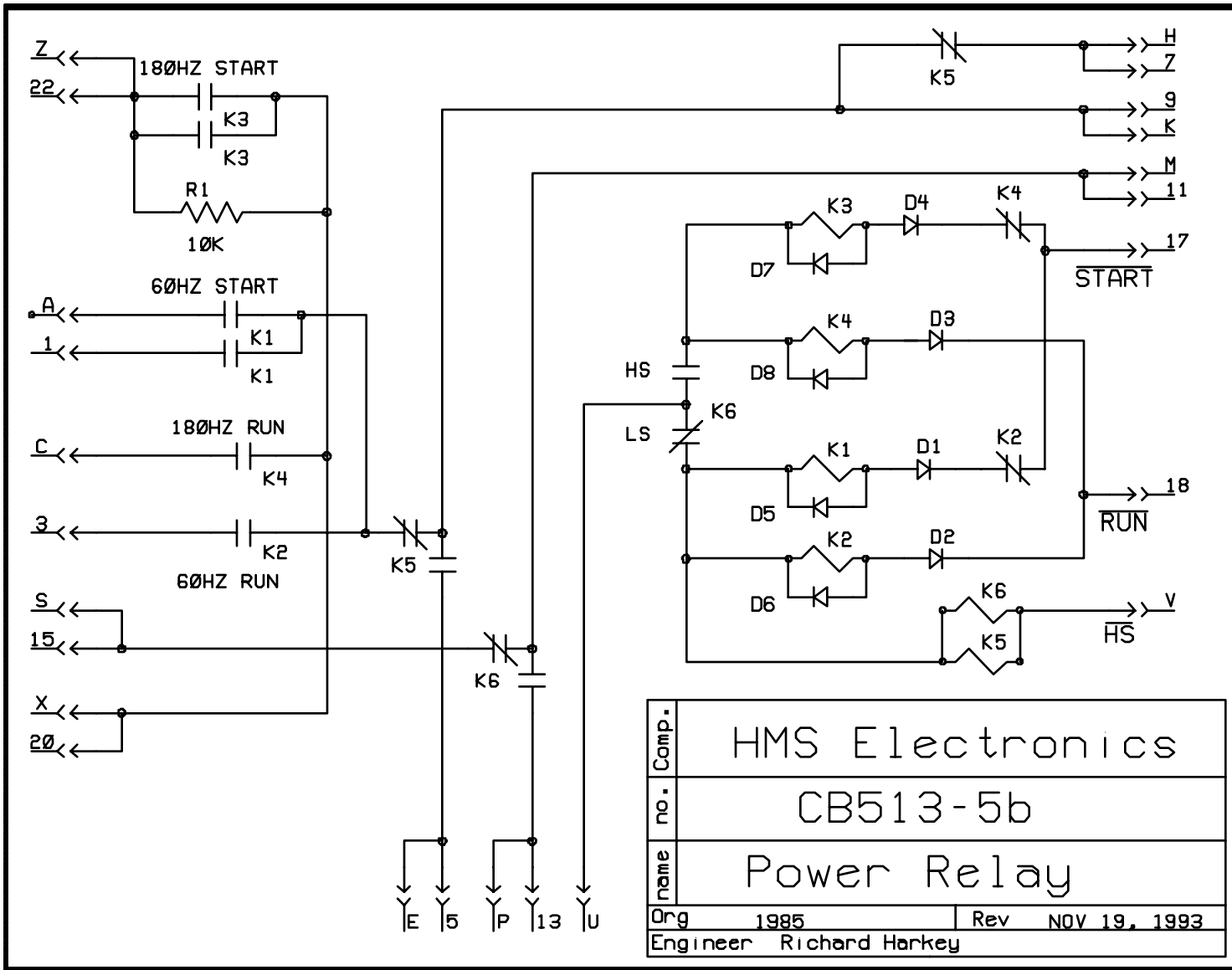
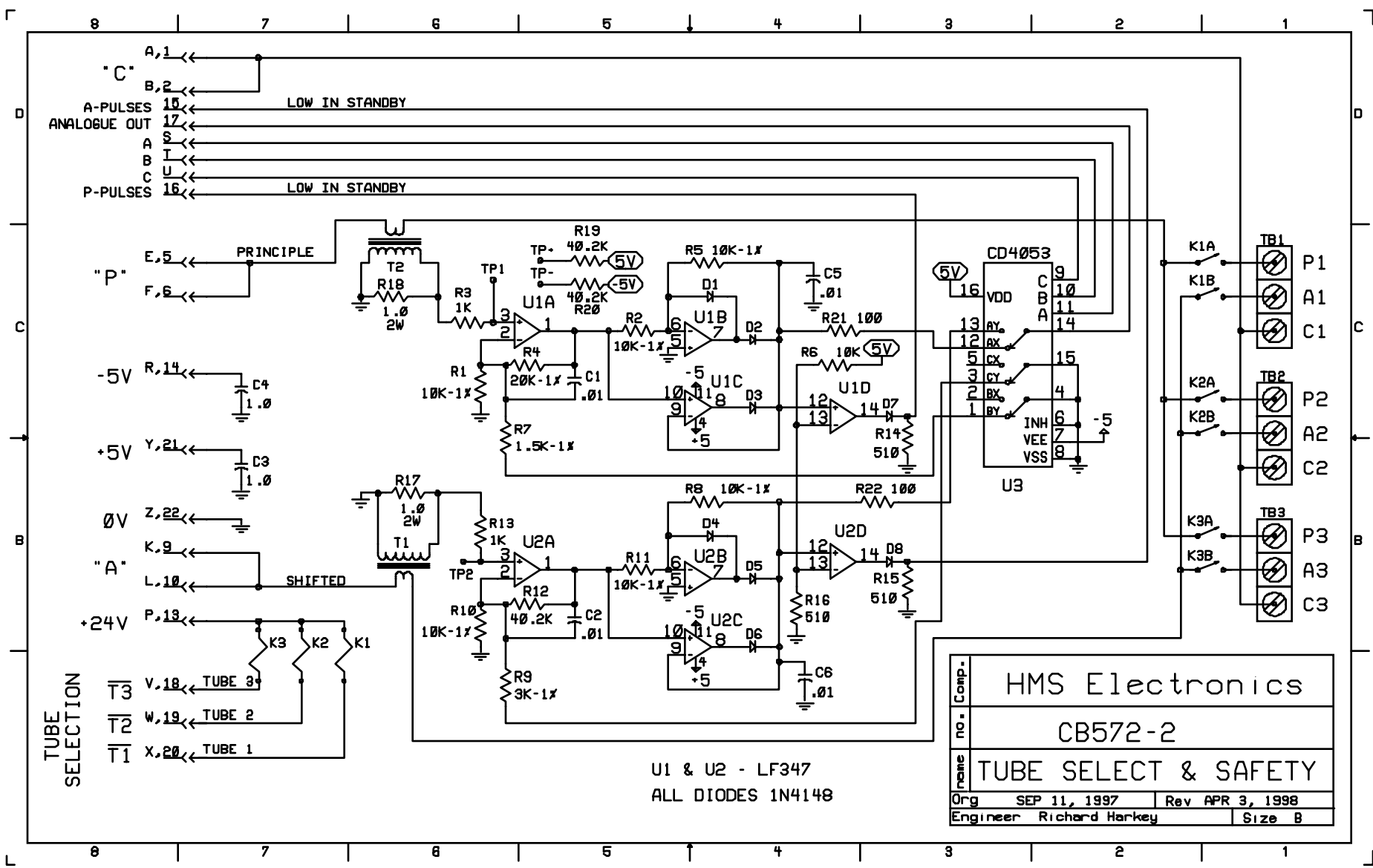


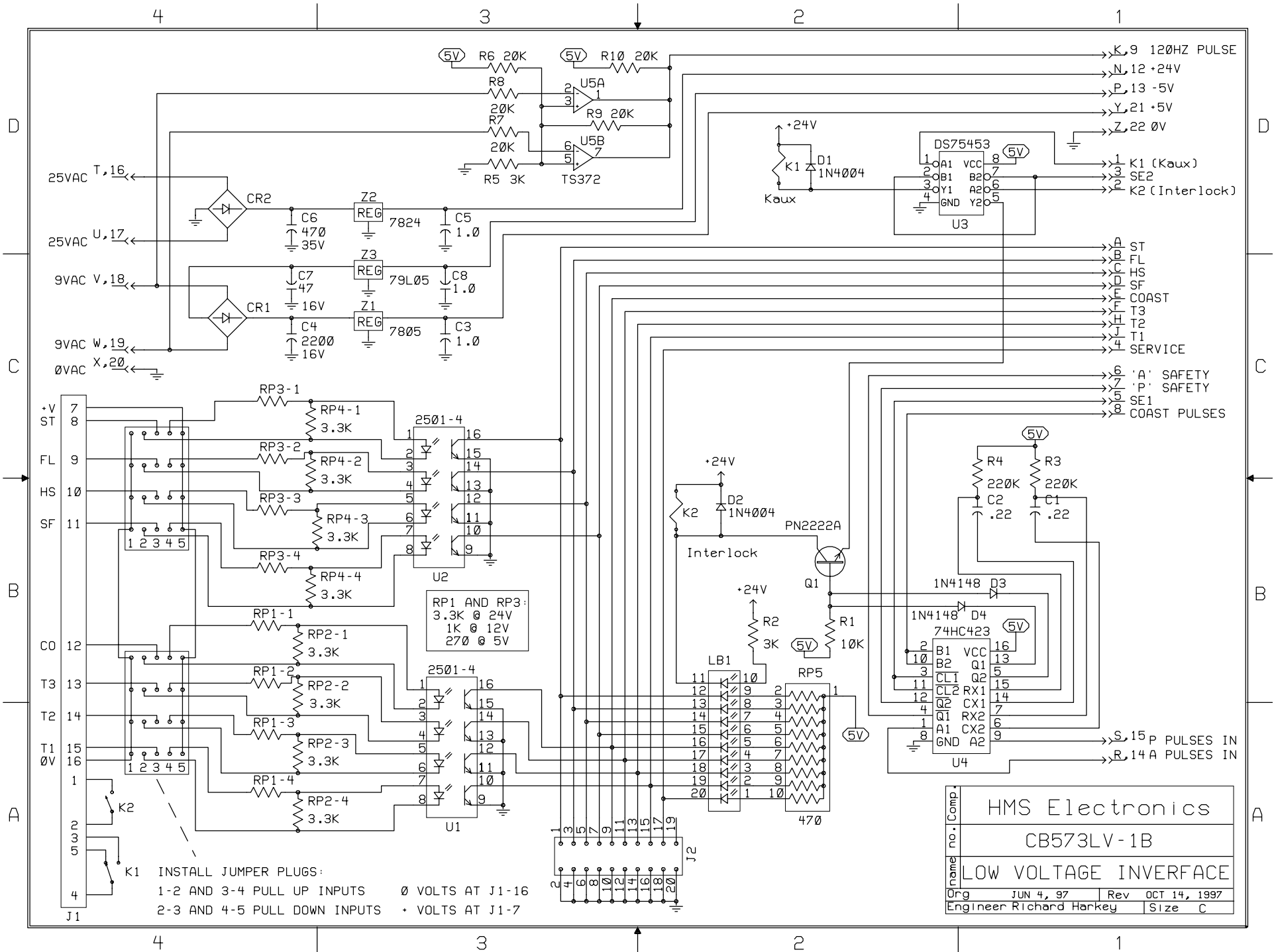
Comp.	HMS Electronics	
no.	CB570	
name	INVERTER BOARD	
Org	10/15/96	Rev
Engineer	Richard Harkey	



Comp.	HMS Electronics	
no.	CB570-2A	
name	INVERTER BOARD	
Org	10/15/96	Rev 01/22/99
Engineer	Richard Harkey	

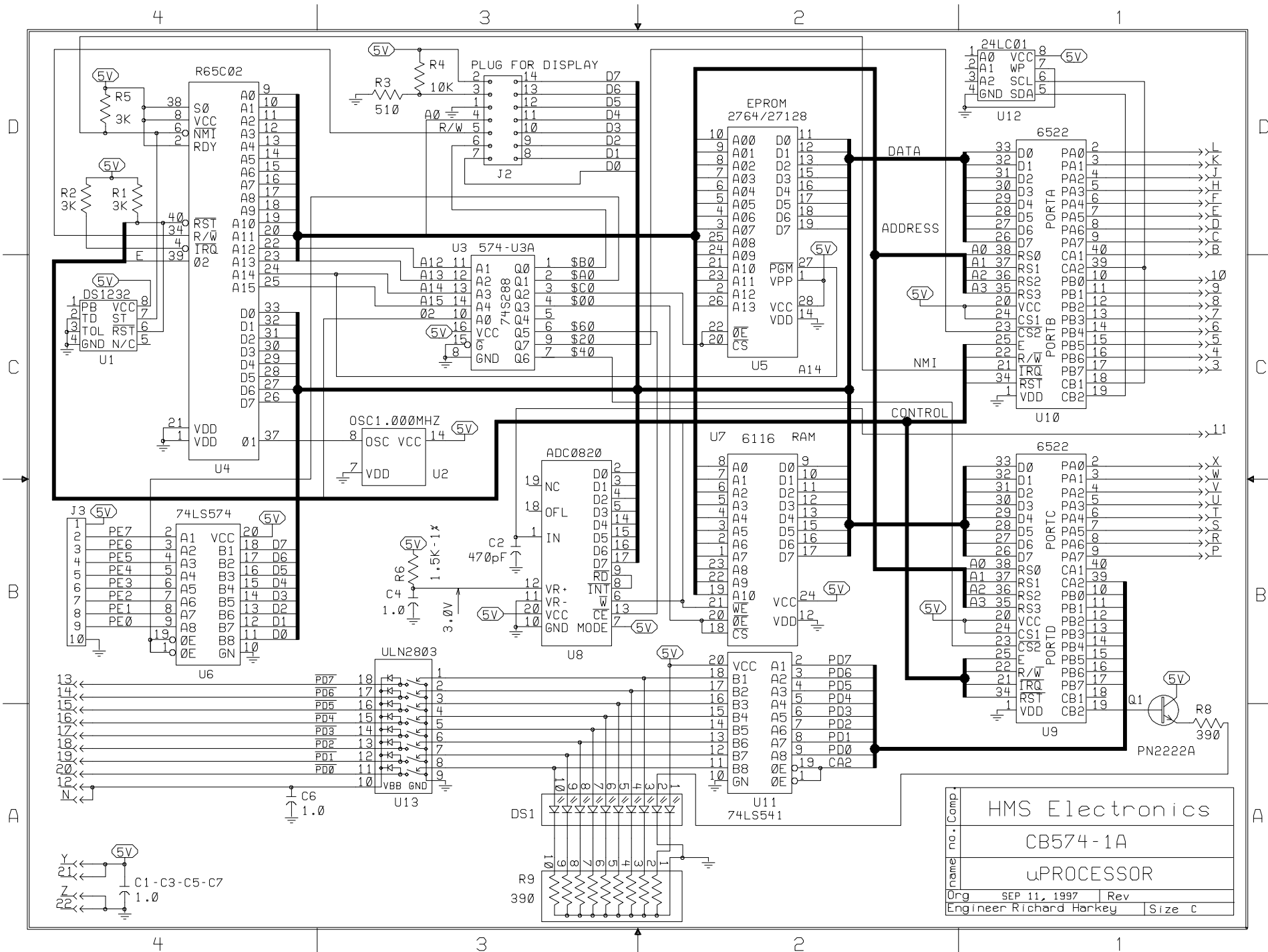






INSTALL JUMPER PLUGS:
 1-2 AND 3-4 PULL UP INPUTS 0 VOLTS AT J1-16
 2-3 AND 4-5 PULL DOWN INPUTS + VOLTS AT J1-7

name	HMS Electronics	
	CB573LV-1B	
	LOW VOLTAGE INTERFACE	
Org	JUN 4, 97	Rev OCT 14, 1997
Engineer	Richard Harkey	Size C



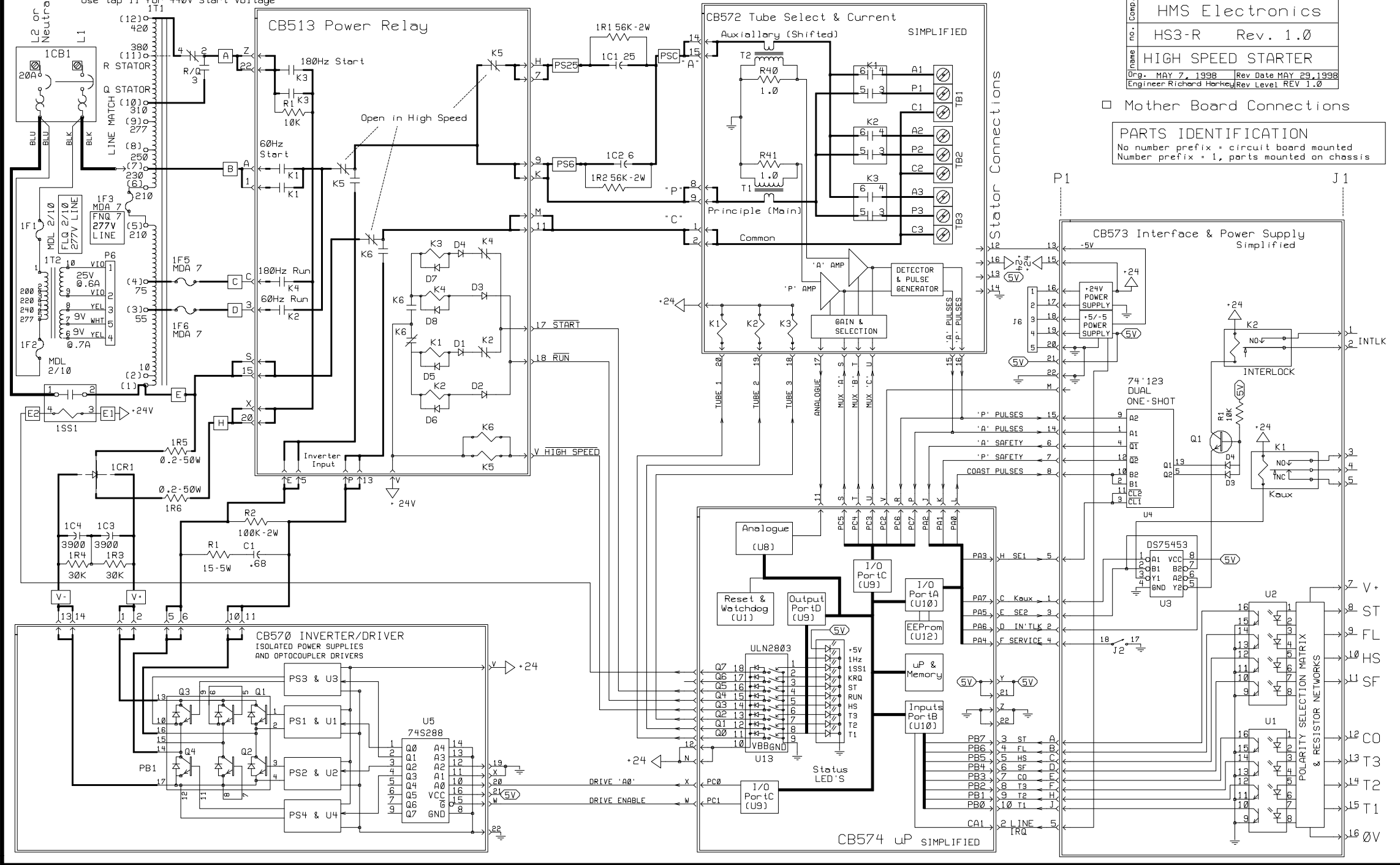
no.	Comp.	
HMS Electronics		
CB574-1A		
uPROCESSOR		
Org	SEP 11, 1997	Rev
Engineer	Richard Harkey	Size c

Use tap 12 for 500V Start Voltage ('R' Stator only)
 Use tap 11 for 440V Start Voltage

Company	HMS Electronics	
no.	HS3-R	Rev. 1.0
name	HIGH SPEED STARTER	
Orig.	MAY 7, 1998	Rev Date MAY 29, 1998
Engineer	Richard Harkey	Rev Level 1.0

□ Mother Board Connections

PARTS IDENTIFICATION
 No number prefix = circuit board mounted
 Number prefix = 1, parts mounted on chassis



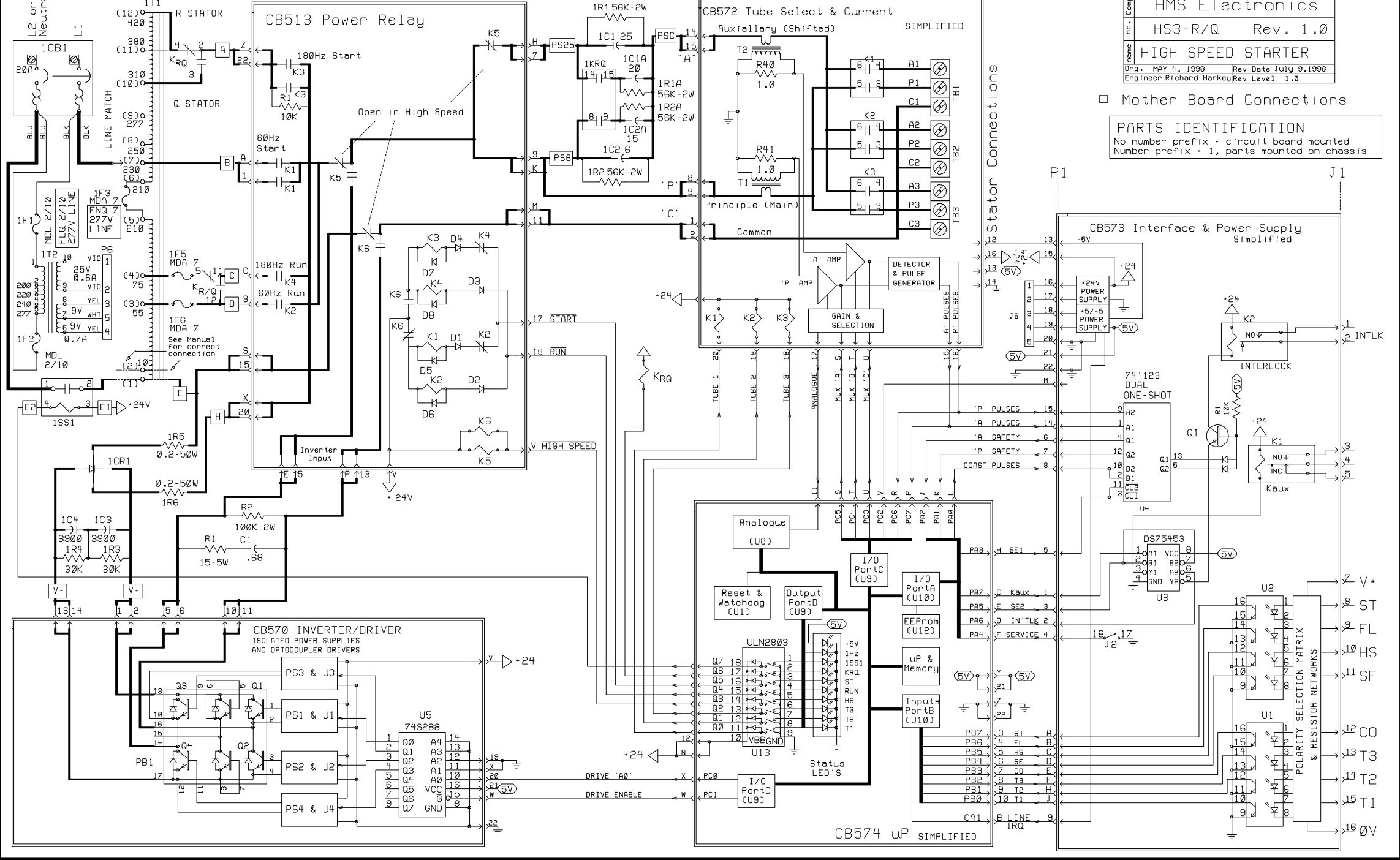
Stator Connections

P1

J1

Z V+
 8 ST
 9 FL
 10 HS
 11 SF
 12 CO
 13 T3
 14 T2
 15 T1
 16 0V

Use tap 12 for 500V Start Voltage ('R' Stator only)
 Use tap 11 for 440V Start Voltage



Comp.	HMS Electronics
no.	HS3-R/Q Rev. 1.0
name	HIGH SPEED STARTER
Orig.	MAY 4, 1998
Rev Date	July 9, 1998
Engineer	Richard Harkey
Rev Level	1.0

□ Mother Board Connections

PARTS IDENTIFICATION
 No number prefix - circuit board mounted
 Number prefix - 1, parts mounted on chassis

Stator Connections

